



Getting My Medication

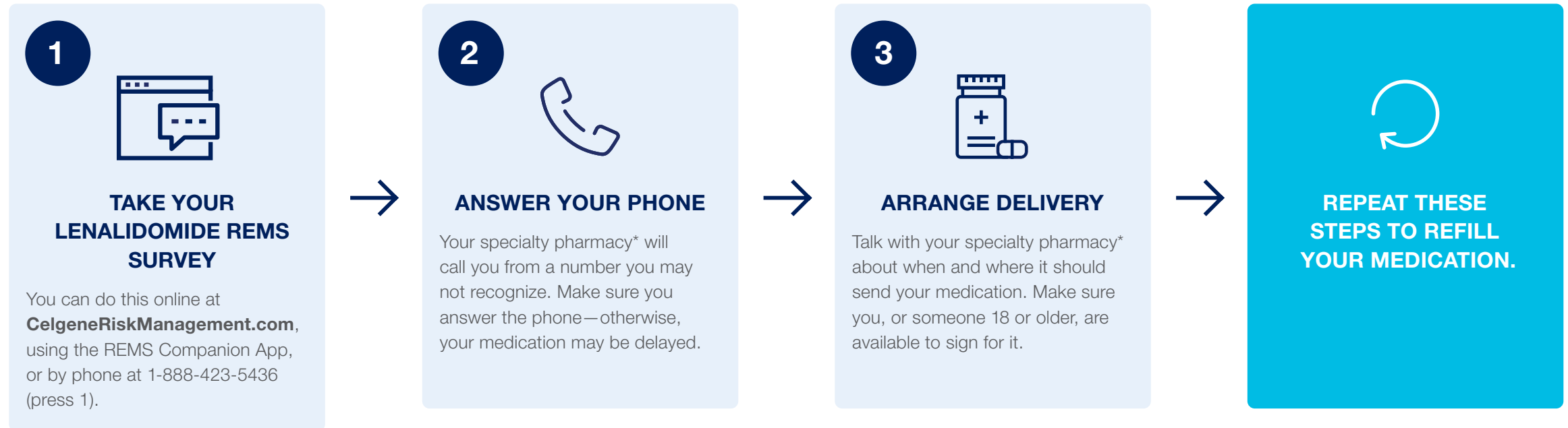
Follow the steps in this brochure to make sure you receive your medication.

REVLIMID is only available through a restricted distribution program called Lenalidomide REMS.

Please see full [Prescribing Information](#) for REVLIMID including Boxed WARNINGS regarding risk to unborn babies, risk of low blood counts and blood clots, and [Medication Guide](#).

How will I get REVLIMID® (lenalidomide)?

Specialty pharmacies handle and ship specific medications that aren't available at traditional pharmacies—like REVLIMID. Once you complete your counseling and enrollment, you will need to take the following steps to make sure your specialty pharmacy delivers your medication:



REMS: Risk Evaluation and Mitigation Strategy

See pages 16-17 of the *My Disease & Treatment* brochure for more information on receiving treatment.

Please see full [Prescribing Information](#) for REVLIMID, including Boxed WARNINGS, and [Medication Guide](#), in this kit.

*You may also have the option to receive your medication from the pharmacy at your physician's office.

SPECIALTY PHARMACY*

Name: _____

Phone number: _____

Have Questions About Our Program or Possible Financial Support?

If you have questions about coverage for a prescribed BMS medication, BMS Access Support may be able to help. Patients and their healthcare provider can complete an enrollment form to learn about programs that may be of assistance. Visit our website or contact BMS Access Support to learn more.



Call Bristol Myers Squibb Access Support at **1-800-861-0048**, 8 AM to 8 PM ET, Monday–Friday



Visit www.BMSAccessSupport.com

The accurate completion of reimbursement- or coverage-related documentation is the responsibility of the healthcare provider and the patient. Bristol Myers Squibb and its agents make no guarantee regarding reimbursement for any service or item.



Getting My Medication

To learn more about getting and taking **REVLIMID® (lenalidomide)**, visit [REVLIMID.com](https://www.REVLIMID.com).

Please see full [Prescribing Information](#) for REVLIMID, including **Boxed WARNINGS**, and [Medication Guide](#).

Download the REMS Companion App.

Take your monthly REMS survey from your smartphone by using the camera to scan the QR code and download the app.



REVLIMID® is a registered trademark of Celgene Corporation, a Bristol-Myers Squibb Company. Access Support® is a registered trademark of Bristol-Myers Squibb Company.